

# AGENDA

**Meeting:** CALNE AREA BOARD

**Place:** Hilmarton Community Centre, Hilmarton School, Poynder Place,  
Hilmarton, Calne SN11 8SQ

**Date:** Tuesday 6 December 2011

**Time:** 7.00 pm

---

Including the Parishes of Calne Without, Bremhill, Hilmarton, Heddington, Cherhill, Compton Bassett and Calne.

---

**The Area Board welcomes and invites contributions from members of the public. The Chairman will try to ensure that everyone who wishes to speak will have the opportunity to do so.**

If you have any requirements that would make your attendance at the meeting easier, please contact your Democratic Services Officer.

**Refreshments and networking opportunities will be available from 6.30 pm, with the opportunity to view a DVD about getting more involved in the democratic process.**

---

Please direct any enquiries on this agenda to Alexa Smith (Democratic Services Officer), on 01249 706610 or [alexa.smith@wiltshire.gov.uk](mailto:alexa.smith@wiltshire.gov.uk)

or Jane Vaughan (Calne Community Area Manager), on 01247 721447 or [jane.vaughan@wiltshire.gov.uk](mailto:jane.vaughan@wiltshire.gov.uk)

The papers connected with this meeting are available on the Council's website at [www.wiltshire.gov.uk](http://www.wiltshire.gov.uk)

Press enquiries to Communications on direct lines 01225 713114 / 713115.

---

## Wiltshire Councillors

Cllr Alan Hill, Calne South and Cherhill  
Cllr Christine Crisp, Calne Rural (Chairman)  
Cllr Chuck Berry, Calne North

Cllr Howard Marshall, Calne Central  
Cllr Anthony Trotman, Calne Chilvester  
and Abberd (Vice Chairman)

Items to be considered	Time
<p>1. <b>Chairman's Welcome and Introductions</b> (<i>Pages 1 - 2</i>)</p> <p>The Chairman will welcome Councillor Stuart Wheeler, Cabinet Representative for Campus Development and Culture (including Leisure, Sport and Libraries).</p> <p>2. <b>Apologies for Absence</b></p> <p>3. <b>Minutes</b> (<i>Pages 3 - 10</i>)</p> <p>To approve and sign as a correct record the minutes of the meeting held on 18 October 2011.</p> <p>4. <b>Declarations of Interest</b></p> <p>Councillors are requested to declare any personal or prejudicial interests or dispensations granted by the Standards Committee.</p>	<p><b>7.00 pm</b></p>
<p>5. <b>Chairman's Announcements</b> (<i>Pages 11 - 12</i>)</p> <p>The Chairman will provide information about:</p> <ul style="list-style-type: none"> <li>a. A household survey called 'What matters to you' (attached)</li> <li>b. The intention to hold a participatory budgeting event at the next Calne Area Board meeting on 14 February 2012, in order to allocate the Area Board youth budget to projects initiated by young people to address issues affecting young people in the Calne Community Area.</li> </ul> <p>Groups who are interested in being involved in this event will be encouraged to get in touch with the Community Area Manager to express an interest.</p>	<p><b>7.10 pm</b></p>
<p>6. <b>Partner Updates</b> (<i>Pages 13 - 22</i>)</p> <p>To receive an update from the partners listed below:</p> <ul style="list-style-type: none"> <li>a. Wiltshire Police (attached)</li> <li>b. Wiltshire Fire and Rescue Service (attached)</li> <li>c. NHS Wiltshire (attached)</li> <li>d. Calne Community Area Partnership – to include a report about the future of the community hub (included in the electronic version of the agenda pack), a report on the release of the second tranche of Area Board funding (in line</li> </ul>	<p><b>7.20 pm</b></p>

with the Community Area Partnership Agreement - 19 April 2011) and an update from the Friends of Abberd Brook (attached)

e. Calne CAYPIG (Community Area Young People's Issues Group)

f. Town and Parish Councils.

7. **Wiltshire Good Neighbours**

7.35 pm

Helen Lines, Health and Wellbeing Project Manager, will provide information about the Wiltshire Good Neighbours service. This will be followed by the opportunity to ask questions.

8. **Area Board Funding** (*Pages 23 - 30*)

7.50 pm

To consider one application made to the Community Area Grants Scheme, as follows:

Goatacre Cricket Club – seeking £866 towards the extension of nets.

To consider one Area Board initiative, as follows:

Calne Voices – seeking £810 towards a facilitated arts project.

To report the allocation of £300 to purchase additional banners for each parish to promote the campus project consultation.

9. **Your Local Issues**

8.00 pm

Councillors will provide an update on community issues and progress on Area Board working groups. This will include:

a. Skate board park working group – Councillor Howard Marshall

b. Calne Area Transport – Councillor Christine Crisp

c. Highways working group – Councillor Christine Crisp

d. Calne campus working group – Councillor Alan Hill

e. Sandpits Lane (section 106) working group – to include approval of the group's terms of reference – Councillor Tony Trotman.

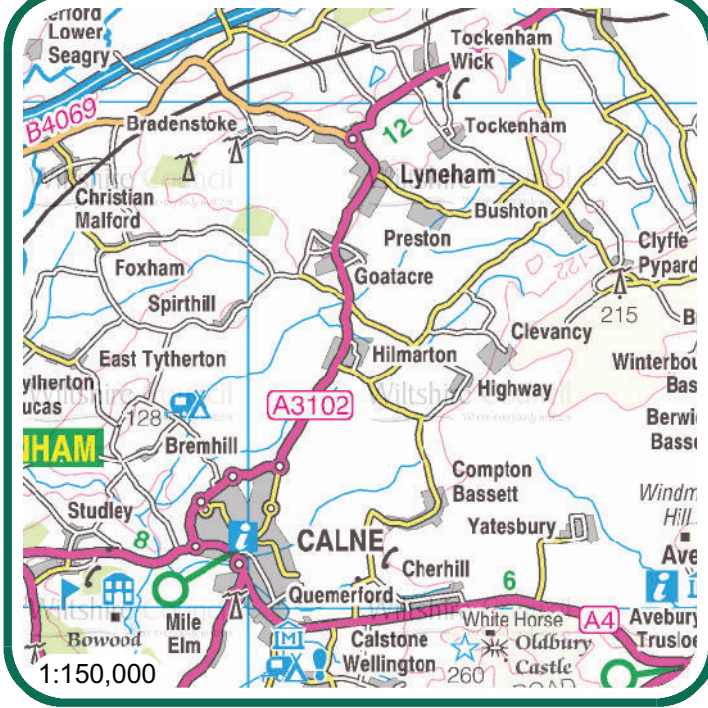
10. **Cabinet Representative**

8.25 pm

Councillor Stuart Wheeler will give a short overview of his role as Cabinet Representative for Campus Development and Culture (including Leisure, Sport and Culture).

- |   |                |
|---|----------------|
| 11. <b>2012 Year of Celebrations in Wiltshire</b>   | <b>8.35 pm</b> |
| Barbara Gray, Events and Sponsorship Manager, will give a presentation about the 2012 year of celebrations in Wiltshire, to include the Olympic Torch route through Wiltshire.  |                |
| 12. <b>Questions from the Audience, Evaluation and Close</b>  | <b>8.50 pm</b> |
| The Chairman will take questions from the audience (depending on their nature, these may need to be responded to after the meeting), ask the audience to take part in an evaluation of the meeting (to help develop future meetings) and set out arrangements for the next meeting. |                |

<p><b>Future Meeting Dates</b></p> <p>Tuesday, 14 February 2012 7.00 pm Calne Town Hall</p> <p>Tuesday, 10 April 2012 7.00 pm Lansdowne Hall</p> <p>Tuesday, 12 June 2012 7.00 pm Beverbrook Sports Facility</p>
--



**Hilmarton Community Centre**  
**Hilmarton School**  
**Poynder Place**  
**Hilmarton**  
**Calne**  
**SN11 8SQ**

  
 Where everybody matters





# MINUTES

**Meeting:** CALNE AREA BOARD  
**Place:** John Bentley School  
**Date:** 18 October 2011  
**Start Time:** 7.00 pm  
**Finish Time:** 8.40 pm

---

Please direct any enquiries on these minutes to:

Alexa Smith (Democratic Services Officer), on 01249 706610 or [alexa.smith@wiltshire.gov.uk](mailto:alexa.smith@wiltshire.gov.uk)

Papers available on the Council's website at [www.wiltshire.gov.uk](http://www.wiltshire.gov.uk)

---

## **In Attendance:**

### **Wiltshire Councillors**

Cllr Alan Hill, Cllr Christine Crisp (Chairman), Cllr Chuck Berry, Cllr Howard Marshall and Cllr Anthony Trotman (Vice Chairman)

### **Wiltshire Council Officers**

Andy Conn (Head of Waste Management), Martin Cook (Area Highways Engineer), Adrian Hampton (Head of Local Highways and Streetscene), Will Kay (Youth Development Coordinator), Alexa Smith (Democratic Services Officer) and Jane Vaughan (Community Area Manager)

### **Town and Parish Councillors**

Calne Town Council – Mercy Baggs, Roy Golding\* and Colin Viner  
Calne Without Parish Council – Richard Aylen and Ed Jones\*  
Hilmarton Parish Council – Jeff Files

### **Partners**

Wiltshire Police – Hans Monahan

Calne Community Area Partnership – David Evans\* and Amanda Venton

\* Denotes nominated representative.

**Total in attendance: 31**

---

<u>Agenda Item No.</u>	<u>Summary of Issues Discussed and Decision</u>
1.	<p><u>Chairman's Welcome and Introductions</u></p> <p>The Chairman welcomed everyone to Calne Area Board and introduced the Councillors and Officers present. The Chairman thanked Nancy Gosling for the music playing before the meeting.</p>
2.	<p><u>Apologies for Absence</u></p> <p>Apologies were received from Shauna Bodman (Cherhill Parish Council), Geoff Dickerson (Heddington Parish Council) and Inspector Martin Schorah (Wiltshire Police).</p>
3.	<p><u>Minutes</u></p> <p>The minutes of the meeting held on 23 August 2011 were approved and signed as a correct record.</p>
4.	<p><u>Declarations of Interest</u></p> <p>There were no declarations of interest.</p>
5.	<p><u>Chairman's Announcements</u></p> <p>The Chairman drew attention to the written announcements included in the agenda pack.</p> <p>This included information about how Wiltshire Council was improving services to support older people and vulnerable people in their homes as a result of a major review.</p> <p>A new free home insulation scheme had also been launched. The new Wiltshire Warm and Well scheme was open to all home owners and private tenants and enabled residents to improve the energy efficiency of their homes through installing loft and cavity wall insulation. To access the scheme, please freephone: 0800 512012 or go to <a href="http://www.warmandwell.co.uk">http://www.warmandwell.co.uk</a>.</p>
6.	<p><u>Partner Updates</u></p> <p>a. The written update from Wiltshire Police was noted. The Chairman thanked Hans Monahan for attending the meeting in the absence of Inspector Schorah.</p> <p>b. The written update from Wiltshire Fire and Rescue Service was noted.</p> <p>c. The written update from NHS Wiltshire was noted.</p>



	<p>d. Calne Community Area Partnership provided a comprehensive written update at the meeting. This was in the form of an annual report for October 2010 until September 2011. An update on the theme groups was provided; Culture, Crime and Community Safety, Economy, Education and Lifelong Learning, Environment, Health and Social Care, Transport and the Community Hub. David Evans thanked everyone who had been involved with the Partnership in the last year.</p> <p>e. Will Kay, the Voluntary Sector Youth Development Co-Ordinator, provided feedback on the summer programme for young people, which had received funding from the Area Board. Seventy four young people had taken part in a range of art, sport and residential activities. Kite boarding equipment had been used on residential trips and in Calne. A question was asked about the youth services budget; Wiltshire Council had made a commitment to continued youth service provision, however further changes were likely, with more information available from November 2011.</p> <p>f. In Calne Without, the Parish Council and a group of local people were looking into having white gates installed to slow traffic. Hilmarton Parish Council reported they had a successful street fair on 3 September and the HAGGIS DVD regarding road safety which had been shown at the Area Board was soon to go live. Cherhill Parish Council asked to be referred to as such, rather than Cherhill and Yatesbury, and this was agreed by the Chairman.</p>
7.	<p><u>Area Board Funding</u></p> <p>Consideration was given to the one application made to the Community Area Grants Scheme.</p> <p><b><u>Decision</u></b>  <b>Castlefields Canal and River Park were awarded £2,821 towards the restoration of the lock.</b></p> <p><b><u>Reason</u></b>  <b><i>The application meets the 2011/12 grant criteria and it addresses issues in the Calne Community Area Plan by enabling people to live in an area where the landscape and natural features are actively protected and conserved. In addition it can be seen to encourage a sense of community cohesion, pride and wellbeing.</i></b></p>
8.	<p><u>Your Local Issues</u></p> <p>Councillors and representatives gave an update on community issues and progress on Calne Area Board working groups.</p> <p>a. The Chairman thanked Andrea Pellegram, Technical Services Manager from the Hills Group and Andy Conn, Head of Waste Management, for coming to the Area Board to present information about the Lower</p>

Compton application by Hills Group. Councillor Crisp explained that as she and Councillor Trotman sat on the Strategic Planning Committee, they were unable to comment on this issue.

Andrea set out that an application for the Lower Compton site had been submitted in August and representations on this should be made to Wiltshire Council planning services by 25 November 2011 in an extension to the consultation.

Andy Conn stated that Hills had been a Wiltshire Council contractor since 1996. The Lower Compton site would be used to manage changes to the waste collection services and the need to reduce the amount of waste going into landfill, which was taxed heavily under European legislation. There would be increased space for black box and blue lidded bin recycling and a more efficient waste transfer facility.

This was followed by a short question and answer session. Common questions raised and their answers were available to view on the Wiltshire Council planning portal. The main issues below were addressed:

- There would be a small increase in job numbers linked to the application and all jobs would be retained in a climate where jobs related to landfill would otherwise be lost.
- A traffic assessment had been undertaken and predicted that the increase in traffic linked to the application was small (a ten per cent increase from at present was approximated). The Hills Group were taking measures to reduce concerns about traffic, for example by introducing a good driver's scheme.
- An environmental and ecological assessment had found no grounds for refusal of the application.
- Composting provision at Lower Compton would change; while household composting would move to Purton, the composting of other material, such as park sweepings, would be retained at Lower Compton. This material was not suitable for sale and was used to cap landfill.
- The proportion of waste dealt with at the site from outside Wiltshire was raised. Andrea would look into and answer via the planning portal.

**Decision**

**Andrea Pellegram would find out the proportion of waste dealt with at the Lower Compton site from outside Wiltshire.**

- b. Skate board park working group. The young people involved in the skate board park working group had committed to raising £10,000 for the project themselves.
- c. The cycle network working group would no longer meet regularly as projects identified would be better dealt with as part of the highways

working group. The group had agreed to meet again in six months time in order to ensure that projects were being moved forward.

- d. Anne Henshaw presented a Calne Area Strategic Transport Plan on behalf of Calne Area Transport. The desired outcomes of the plan were to reduce the carbon footprint, improve air quality, provide safer travel facilities and quality travel information. An action plan was outlined that involved a transport hub, improved use of the web, transport information boards and comprehensive travel routes. Anne then suggested the set up of a working group. The Chairman invited Anne to the next Area Board Co-ordinating group meeting to be held on 15 November in order to discuss in more detail how this should be progressed.
- e. The Chairman reported about highways working group priorities for 2010/12. Priorities one to three for the Area Board had been completed. The project for a pedestrian refuge at Hilmarton would go forward for completion hopefully in this financial year. The lighting scheme for one refuge on the A4 had been agreed following a parish consultation and should be completed this financial year. A grant application for white gates was likely to come to the Area Board later in the year. The signage scheme to direct through traffic away from Curzon Street/Wood Street had been in place for some weeks. A survey of traffic movements found that a pleasing 62% of traffic was recorded turning onto the bypass compared with a previous 40%.

The remaining two priorities at Goatacre and Quemerford/Lake View would be reassessed in January when further funding might be available. A survey and feasibility study had been completed for the A3102 Goatacre project, however funding was not available. A feasibility study had been completed too regarding the A4 Quemerford/Lake View, but this had not produced an achievable project at present. Quemerford would be put forward for the community speed watch scheme in order to help to control traffic speeds.

A potential project to reduce traffic in Back Lane/Sandy Lane and halt the erosion of the sides of the road would be added to the list of issues to be discussed.

The Chairman thanked Ed Jones, Richard Broadhead and Charles Boase especially for their work.

A question was then raised from the floor regarding the traffic lights in Calne town centre outside the Town Hall not beeping. An officer explained that the beeping had been purposefully removed and tactile rotating cones underneath the push button had instead been installed for the visually impaired as part of a national programme. Concern was raised about the timing of the crossroads and people not having enough time to cross the road safely.

	<p><b><u>Decision</u></b>  <b>Martin Cook, Principal Highway Engineer, would investigate whether beeping could be reinstalled at the crossroads in Calne town centre.</b></p> <p><b><u>Decision</u></b>  <b>Martin Cook would investigate timing on the crossroads in Calne town centre.</b></p> <p>f. Councillor Hill gave an update about the Calne campus working group. The first phase of consultation had been completed with eighty per cent of respondents in favour of a campus. The results of the initial phase of consultation were available to view on the Calne campus website: <a href="http://www.wiltshire.gov.uk/communityandliving/communitycampuses/calnecommunitycampus.htm">http://www.wiltshire.gov.uk/communityandliving/communitycampuses/calnecommunitycampus.htm</a>. Councillor Hill sought approval from the Area Board to move to the second phase of consultation, related to how services should best be provided.</p> <p><b><u>Decision</u></b>  <b>Calne Area Board were in support of the Calne campus working group moving into the second phase of their consultation.</b></p> <p>g. An initial meeting had been held for the Sandpits Lane (section 106) working group. This group was an exciting first for Wiltshire Council; enabling local people to have a say in how developer contributions would be spent in their community. Councillor Trotman was looking for interested people to join the working group and a meeting would take place on 9 November 2011 at 4.00 pm in the community hub.</p> <p>A question was asked about potential funding from central Government for a New Homes Bonus scheme.</p> <p><b><u>Decision</u></b>  <b>Brad Fleet, Service Director, would investigate potential funding from a New Homes Bonus scheme.</b></p>
9.	<p><b><u>Close</u></b></p> <p>The Chairman invited any other business from the floor. The meeting was informed there was growing concern about the use of the former Deceuninck building in Calne and the impact of this on Lansdowne Park residents. A petition was available to sign at the meeting. While the Chairman was unable to comment on the issue, representations should be made directly to the Monkton Park office.</p> <p>Frustration was expressed about disabled access on the bus from Chippenham into Devizes.</p>

**Decision**

**Disabled access on the bus service would be referred to the relevant Wiltshire Council department.**

The next Area Board meeting would be held at 7.00 pm on Tuesday 6 December 2011 at Hilmarton Community Centre, with refreshments available from 6.30 pm.



## Chairman's Announcement

### Household Survey – “What matters to you”

The Council and its partners, Wiltshire Police, Wiltshire Wildlife Trust, Probation Service, Wiltshire Fire and Rescue and NHS Wiltshire are undertaking a large random survey to Wiltshire residents in order to understand local people's priorities and needs.

The survey called “What matters to you” will be going out to 20,000 Wiltshire households at random, some 3,000 from the Council's People's Voice panel, as well as a large list of email addresses made up of council contacts and commercial lists. Many of the residents in your community area can expect to receive or have received these through their doors or via email.

We are also making available a large supply of the surveys through reception points in main offices, leisure centres and libraries so that any adult resident aged 16+ can partake if they want to. Naturally the survey will be available through the council's own web site and that of our partners. Many local town and parish councils have also kindly offered to host the survey on their own websites.

Topics covered in the survey include:

- What it's like to live in the area
- Spending priorities
- Community safety issues
- The natural environment
- Healthy living

Please could you encourage local people to take part in the survey if they are asked. Copies of the survey are available at this meeting if anyone wishes to take one away and complete it.

There is also an on line version available as shown in the survey pack - [www.wiltshire.gov.uk/whatmatterstoyou](http://www.wiltshire.gov.uk/whatmatterstoyou) and this is the preferred method of completion as it costs the council nothing and saves postage.

#### **Contact Officer:**

Philip Morgan – Research Manager

Tel: 01225 713186

Email: [Philip.morgan@wiltshire.gov.uk](mailto:Philip.morgan@wiltshire.gov.uk)





**Crime and Community Safety Briefing Paper  
Calne Community Area Board  
Tuesday 6th December 2011**



## **1. Neighbourhood Policing Team**

**Sgt:** Philip Connor

### **Town Centre Team**

Beat Manager – PC Hans Monahan  
PCSO – Shelley Gray, PCSO Barry Mussard,  
PCSO Gaynor Bennett, PCSO Nicole Yates

### **Rural Team**

Beat Manager – PC Alan Blake  
PCSO – Sarah Hardwidge

## **2. NPTs - Current Priorities & Consultation Opportunities:**

Up-to-date details about Neighbourhood Policing Teams including team membership, current priorities and forthcoming community consultation events can be found on the Wiltshire Police Website.

□ Visit the new and improved website at: [www.wiltshire.police.uk](http://www.wiltshire.police.uk)

## **3. Police Authority Representative: Chris Caswill**

Please contact via Wiltshire Police Authority Tel. 01380 734022 or  
<http://www.wiltshire-pa.gov.uk/feedback.asp>

## **4. Performance and Other Local Issues:**

Calne experienced a safe and enjoyable period during the recent Halloween (311011). A lot of work was carried out by the team beforehand in visiting schools and local shops regarding the sale of fireworks, flour and eggs. This strategy was successful last year and no doubt will remain.

On 5<sup>th</sup> November the NPT Team again worked to ensure key events were covered. At the Calne Town event and elsewhere across the area, there were very few reports of nuisance or anti-social behaviour or any incidents involving fireworks which is very pleasing.

Calne has suffered a series of daytime burglaries over the past weeks, the NPT team and our Priority crime team have been working very closely and as a result of community intelligence and a proactive approach an individual has been arrested and is currently on remand. There have been several reported night time non-dwelling burglaries in the Quemerford area, we are asking residents to ensure they keep their sheds and garages secure at all time, and report any suspicious incidents to the Wiltshire Police.

On the 29<sup>th</sup> September 2011 a 52 year old female resident of Dixon Way, Calne was arrested on the order of a county court judge at Swindon. This was in respect of breach of an anti-social behaviour injunction. As a result she spent a week in prison and was released with a reminder that further breaches would invite a more significant sentence. The female further breached the County Court order and is currently serving a 3 month prison sentence. This is a good example of how the Neighbourhood Policing Teams work in partnership (In this case housing Officers) to ensure all reports of ongoing anti social behaviour are tackled in a multi agency approach.

Calne CCTV continues to be an invaluable tool for the community and The Police, we have a fantastic working relationship with Staff, and the CCTV Manager ensures the highest standards are maintained. On 12/11/11 a male committed an armed robbery at Corals Bookmakers in Calne; the offender had a knife and managed to make off with a significant amount of cash. As a direct result of CCTV footage both from Corals and Calne Town, and local intelligence a male was arrested shortly after the incident, he was dealt with by CID and has been charged with the armed robbery.

Calne NPT continue to see good results from community intelligence, there have been several warrants under the misuse of drugs act in recent months, the most recent being in Anchor Road Calne, where Officers discovered herbal cannabis, equipment for cannabis cultivation and what is believed to be a large quantity of stolen property. Two males were arrested and these enquires are ongoing.

Christmas is fast approaching. Whilst Calne is a safe and pleasant Town, I would provide the usual advice regarding personal security when out shopping in busy places, such as keeping purses and wallets out of sight and handbags closed. Also, Christmas shopping left in clear view on car seats or within sight inside unoccupied houses is often an easy target for an opportunistic thief/burglar so please be sensible.

Calne	Crime				Detections	
	October 2009 - September 2010	October 2010 - September 2011	Volume Change	% Change	October 2009 - September 2010	October 2010 - September 2011
Violence Against the Person	249	156	-93	-37%	41%	59%
Dwelling Burglary	51	50	-1	-2%	29%	4%
Criminal Damage	230	232	2	1%	7%	12%
Non Dwelling Burglary	98	135	37	38%	4%	3%
Theft from Motor Vehicle	58	58	0	0%	3%	2%
Theft of Motor Vehicle	16	15	-1	-6%	13%	7%
Total Crime	1053	966	-87	-8%	24%	23%
Total ASB	899	862	-37	-4%		

Wiltshire Police are compared against a group of 8 most similar forces. Wiltshire Police have performed better than peers for Violent Crime in the previous 12 month period (Sept 2010 - Aug 2011) and better than peers for All Recorded Crime in the most recent three months (Jun - Aug 2011)

\*Total Crime comprises all Crime Groupings listed above and also includes Theft and Handling, Fraud and Forgery, Robbery and Sexual Offences

\*\* Detections include both Sanction Detections and Local Resolution

Inspector Martin Schorah  
Area Commander  
Chippenham, Calne and Corsham

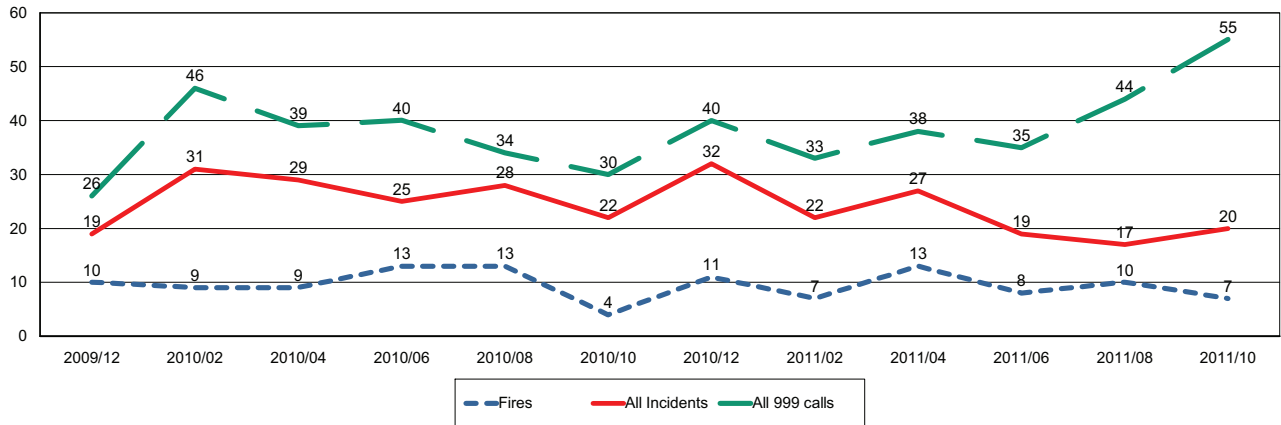




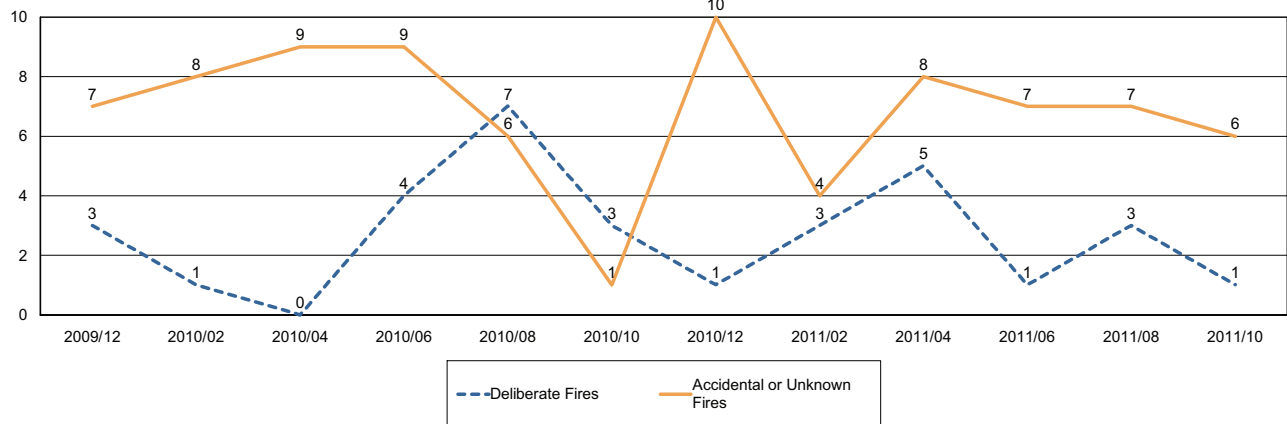
## Report for Calne Area Board

The following is a bi-monthly update of Fire and Rescue Service activity up to and including October 2011. It has been prepared by the Group Manager for the Board's area.

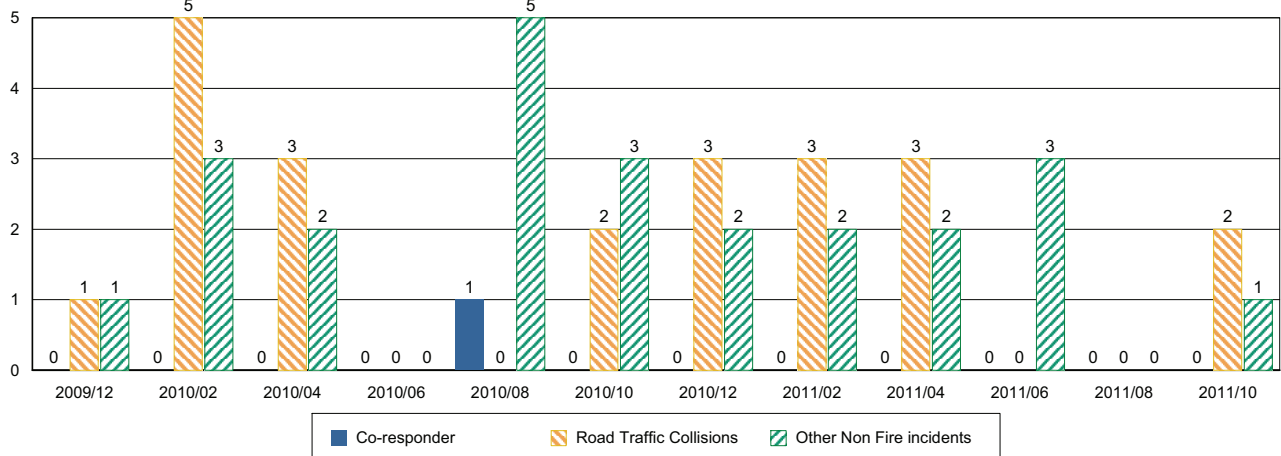
### Incidents and Calls



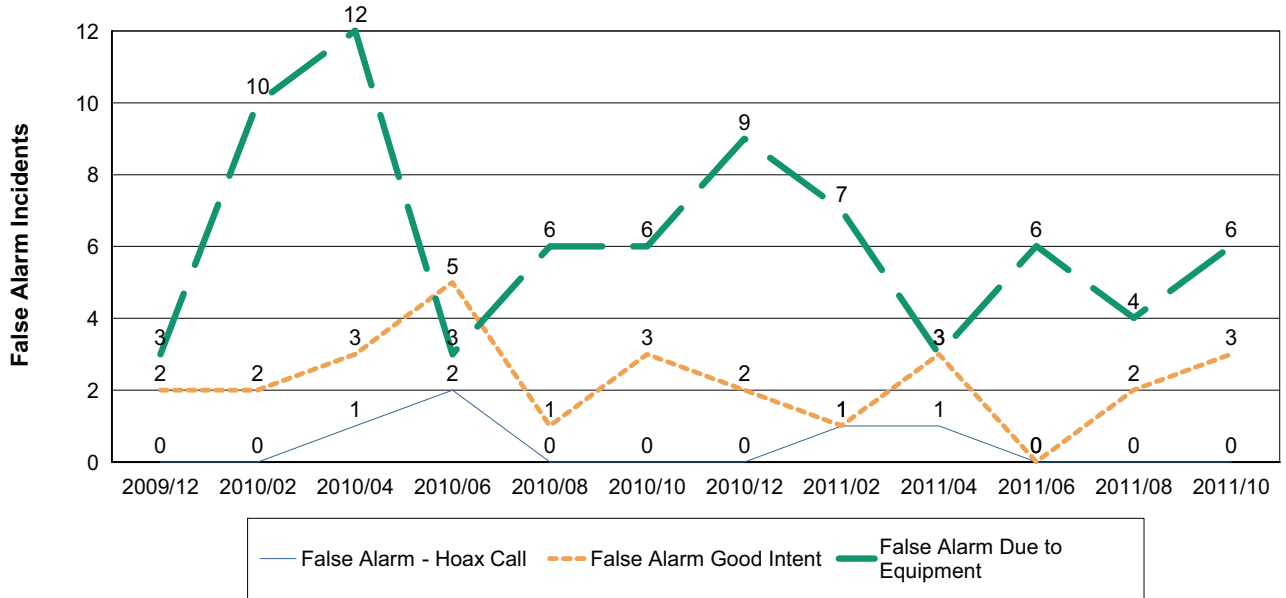
### Fires by Cause



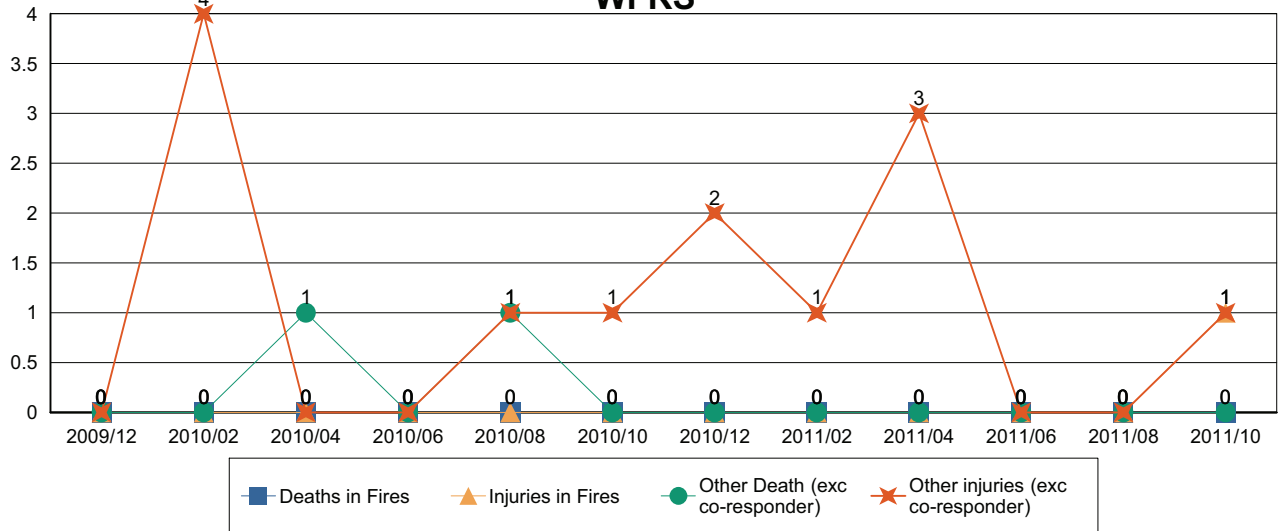
### Non-Fire incidents attended by WFRS



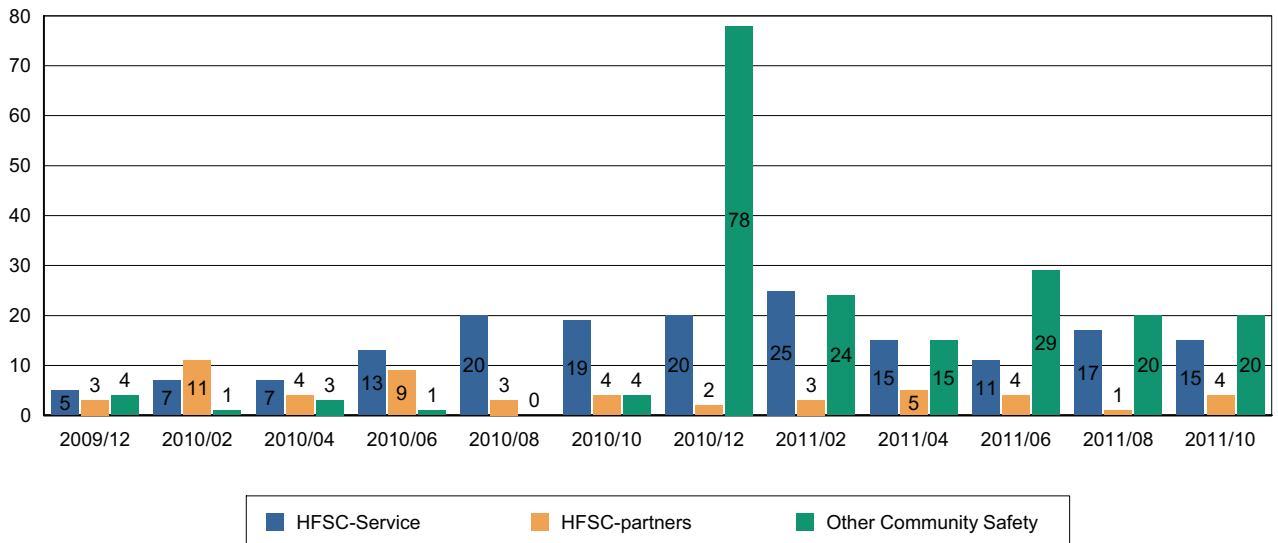
### Number of False Alarm Incidents



### Death & Injuries in incidents attended by WFRS



### Home Fire Safety Checks and other domestic safety



## **NHS Update – November 2011**

On behalf of NHS Wiltshire, the Stroke Association is holding a Focus on Stroke event on **Wednesday 2<sup>nd</sup> November at the Sports Club, London Road, Devizes. Starting at 10am**, the event will include presentations from health and social care, and the voluntary sector. It is also an opportunity for those who have had a stroke and their carers to contribute to the development of stroke care in Wiltshire.

As part of the stroke awareness campaign, NHS Wiltshire's message is for people to maintain a healthy lifestyle, understand the risks, and improve awareness of what to do if a stroke is suspected. So people are encouraged to:

- Learn about the warning signs of a stroke and how to take action.
- Know their personal risk factors for blood pressure, diabetes, and cholesterol – your GP can help you understand these.
- Be physically active and exercise regularly.
- Avoid unhealthy weight gain by keeping to a healthy diet.
- Drink alcohol sensibly.
- If you smoke, seek help to stop now, and avoid breathing in other people's smoke.

As a vital way to help identify whether someone has had a stroke, NHS Wiltshire actively promotes the FAST message. FAST is the acronym to help assess three symptoms:

**F**acial weakness – can the person smile? Has their mouth or eye dropped?

**A**rm weakness – can they raise both arms?

**S**peech problems – can you understand what they are saying? Are they speaking clearly?

**T**ime to call 999

A stroke is a 'brain attack'. It happens when the blood supply to a part of the brain is disturbed or cut off, damaging brain cells and affecting body functions such as the control of limb movement. Studies show that if the patient is treated immediately the risk of long-term damage is reduced, which is why FAST is so important in spotting the signs.

It's also important for people who have had a stroke to engage in exercise, because a stroke often results in reduced strength, mobility and fitness. Strokes also affect moods and can cause social isolation. NHS Wiltshire is therefore working with Wiltshire Council to introduce exercise classes for stroke survivors at leisure centres across the county.

Exercise professionals have received stroke training to run exercise after stroke classes and gym based sessions. The pilot programme is underway at Castle Place Leisure Centre, Trowbridge, and further classes will be offered in Chippenham, Salisbury, Devizes and Marlborough from January 2012.

**Don't forget your flu jab**

Flu is a highly infectious illness that spreads rapidly through the coughs and sneezes of people who are carrying the virus. If someone is at risk of complications from flu, it's really important they have their annual flu jab.

Anyone can get flu, but it can be more serious for certain people, such as:

- people aged 65 or over
- people who have a serious medical condition
- pregnant women

People in these groups are more vulnerable to the effects of seasonal flu (even if they are usually fit and healthy) and it's recognised that they can go on to develop a more serious illness, such as bronchitis and pneumonia, which could result in a stay in hospital. Flu can also make existing medical conditions worse, so it's important people to take up the offer of a vaccination.

The best time of the year to get a flu vaccination is now - the autumn. It's free and it's effective against the latest flu virus strains. Even if someone has already had a flu jab in previous years, they need another one this year to keep immunity up to date. The flu jab may only protect someone for a year, because the viruses that cause flu are always changing. This year's seasonal flu vaccination also includes a vaccine to protect against swine flu. See your GP about the flu jab if you're 65 or over, or if you have any of the following problems (however old you are):

- a serious heart complaint
- a chest complaint or breathing difficulties, including asthma, bronchitis and emphysema
- serious kidney disease
- diabetes
- lowered immunity due to disease or treatment such as steroid medication or cancer treatment
- if you have a problem with your spleen or you have had your spleen removed
- if you have ever had a stroke

**It's also important to get your flu jab if you are pregnant.** Your GP may advise you to have a flu jab if you have serious liver disease, multiple sclerosis (MS) or some other diseases of the nervous system. If you think you may need a flu vaccination, check with your GP, practice nurse or your local pharmacist. If a nurse visits you regularly, ask about getting your flu vaccination. Most GP surgeries arrange vaccination sessions in the autumn.

If you have any questions at all, please ask your GP.



## Friends of Abberd Brook Update

November 2011

### Abberd Pond

The Renovation of the pond steps has now taken place.

### Underpass

Since the mosaics have been in place there has been no vandalism to the underpass or mosaics and very little loitering.

FAB are seeking funds for a plaque acknowledging the children who designed the mosaics to be placed on the wall of the underpass .

### **Abberd Brook**

Following the Species Report, FAB are working with the Wiltshire Wildlife Tust, Wiltshire Council and The Environment Agency to implement a 5 year management plan for the Pond and the Abberd Brook.

They are also seeking assistance from the probation service under the payback scheme to help clear the excess vegetation from the bed of Abberd Brook .

### General Notes

FAB are looking at the possibility of having an interpretation board depicting the various species of fauna and flora which can be found along the brook and pond.

Francis Bosworth

Chair Friends of Abberd Brook.



<b>Report to</b>	<b>Calne Community Area Board</b>
<b>Date of Meeting</b>	<b>6<sup>th</sup> December 2011</b>
<b>Title of Report</b>	<b>Community Area Grants</b>
<p><b>Purpose of Report</b></p> <ul style="list-style-type: none"> <li>• To ask Councillors to consider 1 application seeking 2011/12 Community Area Grant Funding and 1 Area Board Project/Councillor led initiative:             <ol style="list-style-type: none"> <li>1. <b>Goatacre Cricket Club</b> - requesting £886 towards the extension of cricket net surfaces.  Officers recommend that a grant of £886 is awarded, conditional upon the balance of funding being in place.</li> <li>2. <b>Area Board Project - Calne Voices</b> – requesting £810 towards the provision of a facilitated arts project for people with learning difficulties and autism.  Officers recommend that a grant of £810 is awarded.</li> </ol> </li> <li>• To report that, at its meeting of the 15<sup>th</sup> November 2011, the Area Board Co-ordinating group used its delegated authority to allocate the sum of £300.00 to the Calne Community Campus Working Group. This was to provide banners promoting the 2<sup>nd</sup> phase of Calne Campus consultation to the Calne Community Area Parishes.</li> </ul>	

## 1. Background

- 1.1. Area Boards have authority to approve Area Grants under powers delegated to them by the Deputy Leader and Cabinet member for Community Services. Under the Scheme of Delegation Area Boards must adhere to the Area Board Grants Guidance for funding.
- 1.2. In accordance with the Scheme of Delegation, any decision of an Area Board that is contrary to the funding criteria and/or the officer's recommendation would need to demonstrate that the application in question has a wider community benefit, and give specific reasons for why this should justify an exception to the criteria.
- 1.3. The emphasis in the Coalition Government's Localism agenda supports the ethos of volunteering and community involvement. With this in mind Community Area Grants should be encouraged from and awarded to community and voluntary groups.
- 1.4. Area boards will not consider applications from town and parish councils for purposes that relate to their statutory duties or powers that should be funded from the local town/parish precept. However this does not preclude bids from town/parish councils, encouraging community projects that provide new opportunities for local people or those functions that are not the sole responsibility of the town/parish council.
- 1.5. In addition to Community Area Grants, Councillors can submit an Area Board Project which differs from Community Area Grants in that they do not require match funding. Area Board Projects should not be used to avoid complying with Community Area Grant criteria.
- 1.6. Area Board Projects are designed to enable the Area Board to address community issues or projects identified in the Community Plan/Local Agreement for Wiltshire. An application form is used and quotes for project work have to be provided in a similar manner to the Community Area Grant Scheme.
- 1.7. Officers are required to provide recommendations in their report, although the decision to support applications and to what level is made by Wiltshire Councillors on the Area Board.
- 1.8. Funding applications will be considered at every Area Board meeting.
- 1.9. All applicants are encouraged to contact Charities Information Bureau who is working on behalf of Wiltshire Council to support community and voluntary groups, town and parish councils to seek funding for community projects and schemes both from the Area Board and other local and national funding sources.
- 1.10. Paper copies of funding applications will no longer appear as part of the agenda in an attempt to reduce volume of paper used. However, the

application forms will be available on the Wiltshire Council web site and hard copies available upon request.

- 1.11. The 2011/2012 funding criteria and application forms are available on the council's website ([www.wiltshire.gov.uk/areaboards](http://www.wiltshire.gov.uk/areaboards)) or paper versions are available from the Community Area Manager.
- 1.12. One application to this round has been withdrawn as it did not all of the relevant information was included and it could not be assessed against criteria.

<b>Background documents used in the preparation of this Report</b>	<ul style="list-style-type: none"><li>• Community Area Grant Application Pack 2011/12</li><li>• Calne Community Area Plan – 2004-14 (incl. 2006/2010 update)</li><li>• Local Agreement for Wiltshire</li><li>• Area Board Grants Guidance 2011/12</li></ul>
--	---

## **2. Main Considerations**

- 2.1. Councillors will need to be satisfied that grants awarded in the 2011/12 year are made to projects that can realistically proceed within a year of the award being made.
- 2.2. The funding contained within this report forms the 5th round of funding during 2011/12.
- 2.3. The final round will be considered as follows:
  - 14<sup>th</sup> February 2012 (deadline for applications – 3<sup>rd</sup> January 2012)

## **3. Environmental & Community Implications**

Community Area Grants will contribute to the continuance and/or improvement of cultural, social and community activity and wellbeing in the community area, the extent and specifics of which will be dependent upon the individual project.

## **4. Financial Implications**

- 4.1. Awards must fall within the Area Boards budget allocated to the Calne Community Area Board.
- 4.2. Following the last grants awarded Calne Area Board meeting on the 18<sup>th</sup> October 2011 the balance of funding remaining was £28,907.83.

- 4.3. In accordance with decision making authority delegated to the Area Board, at the ABC meeting on 15<sup>th</sup> November 2011 Councillor Alan Hill proposed and it was agreed that the sum of £300.00, should be allocated to the Calne Community Area Campus working group in order to provide 6 banners promoting the 2<sup>nd</sup> round of community consultation concerning the proposed Campus, specifically in the Villages.
- 4.4. The total budget available to the Area Board for this round of community area grants is therefore £28,607.83
- 4.5. If grants are awarded in line with officer recommendations, the Calne Community Area Board will have a balance of £26,911.83.

**5. Legal Implications**

- 5.1. There are no specific Legal implications related to this report.

**6. HR Implications**

- 6.1. There are no specific HR implications related to this report.

**7. Equality and Inclusion Implications**

- 7.1. Community Area Grants give all local community and voluntary groups, Town and Parish Councils an equal opportunity to receive funding towards community based projects and schemes.
- 7.2. Implications relating to individual grant applications are outlined within section 8 – “Officer Recommendations”.

**8. Officer recommendations**

Ref	Applicant	Project proposal	Funding requested
8.1	Goatacre Cricket Club	Net Extension	£886

- 8.1.1. **It is recommended that Goatacre Cricket Club is awarded a grant of £886 towards a project that will extend net surfaces to make them longer and safer.**
- 8.1.2. Officers are of the opinion that this application meets 2011/12 grants criteria.

- 8.1.3. There is a specific link with the Calne Community Area Plan through enabling leisure recreation in the villages and also activities for young people in villages.
- 8.1.4. A previous grant application from the cricket club was awarded in August 2009. This was for £855 and provided new and replacement tools and equipment for the club.
- 8.1.5. The Cricket Club has a long history and a record of serving people from a wide variety of social groupings (age/gender/ability/ethnicity).
- 8.1.6. The club is known to actively establish links with local schools and is attracts increasing numbers of boys and girls to the club and to the benefits of engaging in sporting activities.
- 8.1.7. The application also links to Local Agreement for Wiltshire priorities through encouraging lifestyle changes that will have a positive impact on the health of participants and their families, improving adult participation and young people's participation in positive activities.
- 8.1.8. A decision not to fund this application will result in a delay while the organisation seeks other funding sources.

Ref	Applicant	Project proposal	Funding requested
8.2	Area Board Project	A facilitated arts project for people with learning difficulties and autism.	£810

- 8.2.1 **It is recommended that £810 is allocated to the provision of a Calne Voices arts project for people with learning difficulties and autism.**
- 8.2.2 The project addresses issues in the Calne Community Area Plan encouraging a sense of community cohesion, pride and well being.
- 8.2.3 The project also addresses targets for the Local Agreement for Wiltshire through:
  - a) Helping local communities develop their own priorities and improvements.
  - b) Improving the way Wiltshire organisations work together to plan and deliver services in local communities.
  - c) Creating stronger, more inclusive communities.
  - d) Supporting people to have independent and fulfilling lives as part of their local community.
- 8.2.4 This project forms an output of the Calne Voices project which the area board has been involved in developing from its inception and has been designed in partnership with local people with learning difficulties and autism and with people who support them.

- 8.2.5 Wiltshire Councils Arts Development Officer has provided advice and support surrounding the design of the project and also in identifying suitable potential facilitators.
- 8.2.6 Calne Voices has been working with people with autism and learning difficulties and organisations and agencies who provide support to these people since July 2011. In October a major stakeholders event took place at Marden House, Calne bringing together many service providers and users to identify issues.
- 8.2.7 This area board project will help the group to draw out more detail by creating a focus for people with learning difficulties and autism that will be more appropriate for their needs. It will also produce a resource that will enable people with learning difficulties and autism to voice and promote their issues to the wider community through artworks that will be shared with schools, libraries and other local groups and venues.
- 8.2.8 If the area board chooses not to allocate funding, this project will not take place.

<b>Appendices:</b>	<b>Appendix 1 Grant application – Goatacre Cricket Club</b> <b>Appendix 2 Area Board Project – Calne Voices art project</b>
--------------------	--

No unpublished documents have been relied upon in the preparation of this report.

<b>Report Author</b>	Jane Vaughan, Community Area Manager Tel: 01249 706447 E-mail <a href="mailto:jane.vaughan@wiltshire.gov.uk">jane.vaughan@wiltshire.gov.uk</a>
----------------------	--





